

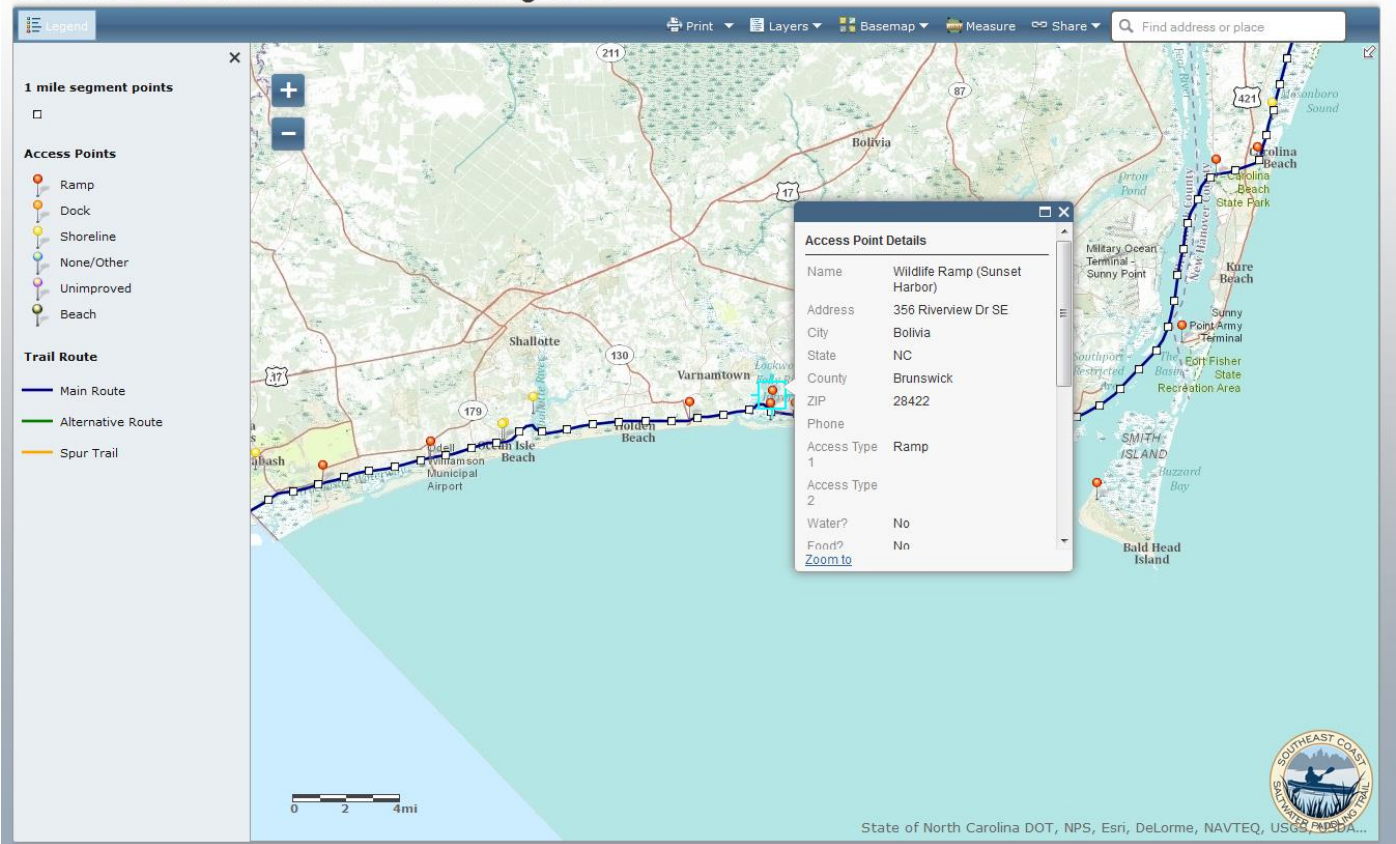


Southeast Coast Saltwater Paddling Trail

Connecting the coasts of Virginia, North Carolina, South Carolina, and Georgia

Interactive Map Tools

Southeast Coast Saltwater Paddling Trail



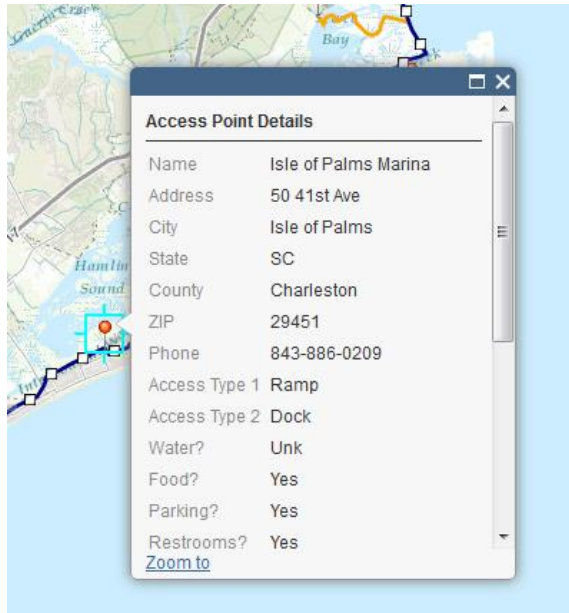
Zooming In/Out

Zoom in and out using the + and – buttons on the map or you can zoom in and out by rolling the wheel on your mouse.

Panning

You can drag the mouse on the map by clicking and holding to move the center position around.

Selecting Features



Simply click on the trail line or the access point icons to see more details about the location. The popup window can also be expanded by clicking the square “maximize” button at the top of the popup window. Otherwise, scroll to see all of the information.

Overview Window



Click the arrow in the upper right of the map to open the overview map window. You can also pan around the main map in the overview map.

Legend Button

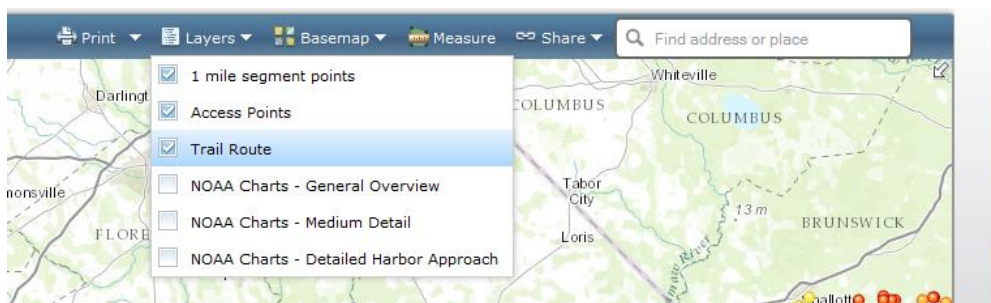
The legend button toggles the legend off and on. Close the legend by click the x in the upper right corner of the legend.

Printing Tool



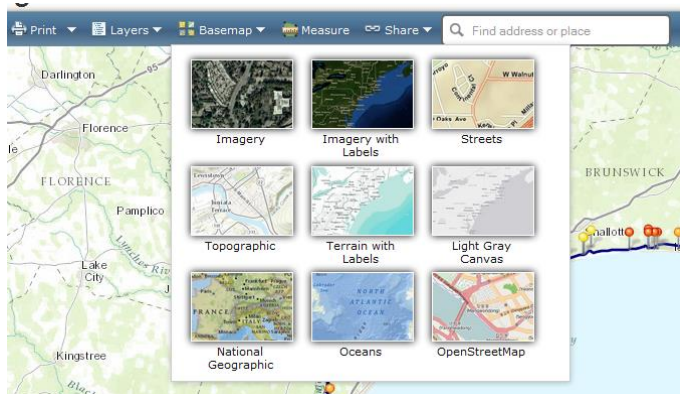
The print button allows you to print a copy of the map exactly as you have shown in the viewer. You can choose from PDF or image by using the arrow dropdown menu. Once the file is ready, the status will change to "Printout" Click that link to download your map image.

Layers Tool



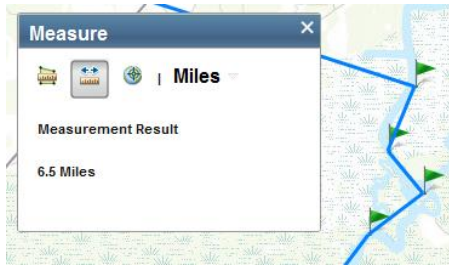
The Layers dropdown tool allows you to check map features on and off as you like. This is where you will find the NOAA charts.

Basemap Tool



The basemap tool allows the user to change the background map to one of the nine options shown.

Measure Tool



Use the measure tool to help estimate distances between points of interest, find the latitude and longitude of a point or estimate the area of a location. Click the icon of the tool you want to use. When done measuring, click the icon again to stop (or close the window with the x in the corner).

Share Tool

Share the map with your friends and family via email, Facebook, or Twitter

Search Tool

Type in any US address or point of interest to locate in the map.

Questions?

Email to info@secoastpaddlingtrail.com